

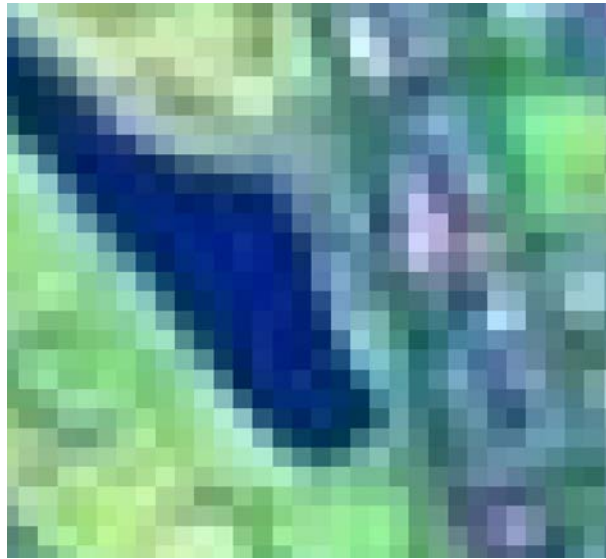


HEXAGON
GEOSPATIAL

Case Study – increasing the efficiency of construction 6th South Australia Space Forum

Roland Klamt, Hexagon Geospatial Solutions

A brief Space timeline



1970

1980

1990

2000

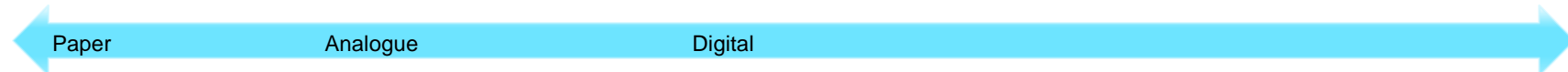
2010

Landsat
Commercial Use

GPS
Civilian Use

Internet
Modern Use

Google Earth
Population Exposure



Paper

Analogue

Digital



80 m

30 cm

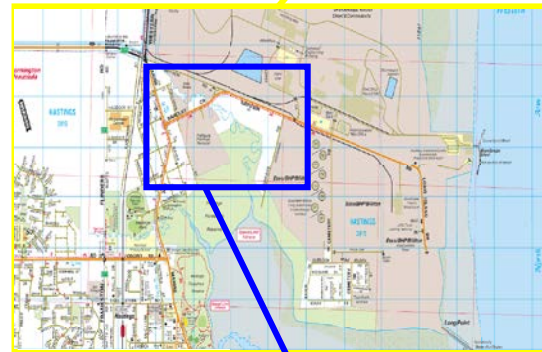
Change over the timeline

The Satellite (Upstream provision)

- Resolution
- Positional Accuracy
- Revisit Times
- Time of Deliver
- Cost of Imagery
- Ordering Imagery

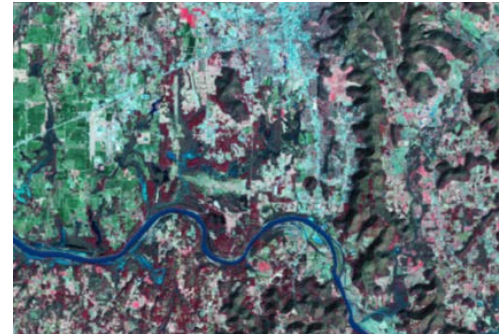
The Consumer (Downstream exploitation)

- Size of Data
- Computing Power
- Storage
- Processing Software



Growing usage over timeline

- **Mapping**
- **Natural Resource management and monitoring**
- **Exploration**
- **Navigation, Route planning and mobility**
- **Site Assessment and Feasibility studies**
- **Environmental Impact**
- **Change Detection**
- **Rehabilitation**
- **Construction Monitoring**
- **Insurance Assessment**
- **Appraisal and Valuation**



A Star Trek Enterprise shuttlecraft is shown in a three-quarter view, flying through space. The shuttlecraft is dark grey with a prominent saucer section and a nacelle. The nacelle's circular opening is illuminated with a bright blue light. The shuttlecraft is positioned above the Earth's atmosphere, with the blue and white clouds of the planet visible below. In the background, the large, cratered surface of the moon is partially visible against the blackness of space, which is filled with numerous stars.

SPACE the Final Frontier

Thank You